



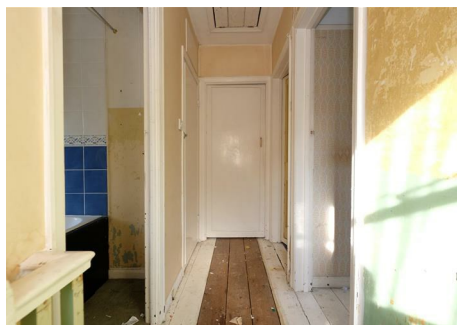
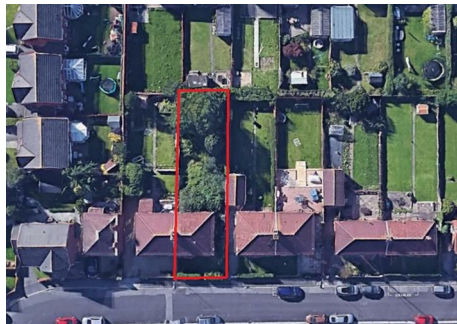
0117 973 6565

www.hollismorgan.co.uk

post@hollismorgan.co.uk

hollis
morgan

auction



15 St. Bernards Road, Shirehampton, Bristol, BS11 9US

Auction Guide Price £216,000 +++

Hollis Morgan SEPTEMBER AUCTION - A classic SEMI DETACHED Freehold property (939 Sq Ft) with a large REAR GARDEN and now in need of BASIC UPDATING in this sought after LOCATION.

Welcome to Hollis Morgan Live Online Auctions www.hollismorgan.co.uk

FOR SALE BY AUCTION

*** SOLD @ HOLLIS MORGAN SEPTEMBER AUCTION ***

GUIDE £150,000 +++
SOLD £216,000

LOT NUMBER 1

Wednesday 25th September 2019

All Saints Church Pembroke Road, Clifton, Bristol BS8 2HY

Legal Pack Room and Registration will be open from 18:15

The sale will begin promptly at 19:00

PRE AUCTION OFFERS

On this occasion the vendors will NOT be considering pre auction offers.

EXTENDED COMPLETION

Completion is set for 8 weeks or earlier subject to mutual consent.

SOLICITORS

Amanda Easton

AMD Solicitors

139 Whiteladies Road, Bristol, BS8 2PL

AmandaEaston@amdsolicitors.com

0117 973 5647

ONLINE LEGAL PACKS

Digital Copies of the Online legal pack can be downloaded Free of Charge.

Please visit the Hollis Morgan Website and select the chosen lot from our Current Auction List.

Follow the RED link to "Download Legal Packs" For the first visit you will be required to register simply with your email and a password.

Having set up your account you can download legal packs or if they are not yet available they will automatically be sent to you when we receive them.

You will be automatically updated by email if any new information is added.

There will be a note added to the list to confirm AUCTION PACK NOW COMPLETE when no further information is due to be added.

*** STAY UPDATED *** By registering for the legal pack we can ensure you are kept updated on any changes to this Lot in the build up to the sale.

THE PROPERTY

A classic Freehold semi detached property (939 Sq Ft) with bright and airy accommodation arranged over two floors occupying a large rectangular plot and rear garden / side access.

Sold with vacant possession

LOCATION

St Bernards Road is in the heart of Shirehampton and is well located to take advantage of the large range of amenities on the local High Street which is a short walk away.

In addition, Shirehampton Park Golf Course is adjacent to the properties and within walking distance are the period manor houses and estates of Kings Weston and Blaise Castle, all providing plenty of recreational space and woodland walks.

Bristol City Centre is within a 10 minute drive and the M5 motorway is also easily accessible making Shirehampton a particularly convenient commuting location.

Shirehampton also benefits from train station which also provides direct access into the City.

THE OPPORTUNITY

FAMILY HOME FOR BASIC UPDATING

Whilst the property has been well maintained it would now benefit from basic updating to create a fine family home in this sought after residential location.

We understand the value of the renovated property is in the region of £250,000

ATTIC CONVERSION / EXTEND

There is scope to convert the attic and extend to the rear to create further accommodation.

Subject to consents.

RENTAL APPRAISAL

What rent can we achieve for you?

The Bristol Residential Letting Co. are confident this property would make a good rental investment. Josh Box of The Bristol Residential Letting Co suggests a rent in the region of;

3 bedroom house - £950pcm - £1050pcm

If you would like to discuss more detail on the potential for rental, you can call me (0117 370 8818) or email (josh@bristolreslet.com) for a no obligation discussion. Alternatively why not drop into my Office (222 North Street, Southville, BS3 1JD) where I am always happy to advise investors on maximising their investment.

I will look forward to hearing from you and helping you with your investment.

Yours faithfully,

Josh Box
Lettings Associate

BUYER'S PREMIUM

Please be aware all purchasers are subject to a £1000 + VAT (£1,200 inc VAT) buyer's premium which is ALWAYS payable upon exchange of contracts whether the sale is concluded before, during or after the auction date.

GUIDE PRICE

An indication of the seller's current minimum acceptable price at auction. The guide price or range of guide prices is given to assist consumers in deciding whether or not to pursue a purchase. It is usual, but not always the case, that a provisional reserve range is agreed between the seller and the auctioneer at the start of marketing. As the reserve is not fixed at this stage and can be adjusted by the seller at any time up to the day of the auction in the light of interest shown during the marketing period, a guide price is issued. This guide price can be shown in the form of a minimum and maximum price range within which an acceptable sale price (reserve) would fall, or as a single price figure within 10% of which the minimum acceptable price (reserve) would fall. A guide price is different to a reserve price (see separate definition). Both the guide price and the reserve price can be subject to change up to and including the day of the auction.

RESERVE PRICE

The seller's minimum acceptable price at auction and the figure below which the auctioneer cannot sell. The reserve price is not disclosed and remains confidential between the seller and the auctioneer. Both the guide price and the reserve price can be subject to change up to and including the day of the auction.

SURVEYS AND VALUATIONS

If you would like to arrange a survey or mortgage valuation of this Lot BEFORE the auction please instruct your appointed surveyor to contact Hollis Morgan and we will arrange access for them to inspect the property. Please note that buyers CANNOT attend the surveys and the surveyors are responsible for collecting and returning keys to the Hollis Morgan offices in Clifton.

BIDDING AT THE AUCTION

This property is for sale by public auction and if you intend to bid please bring the following:

Proof of identity (valid passport or photo driving licence).
Proof of address (bank statement, recent utility bill, council tax bill or tenancy agreement).
10% deposit payment.
Buyers premium payment.
Details of your solicitor.

You will need to register to bid – registration will be open from 18:15

Forms can be downloaded and completed beforehand (found in the legal pack) or collected at the auction venue.

PAYING THE DEPOSIT & BUYERS PREMIUM

We can only accept the following at the auction:

Personal or Company Cheque
Bankers Draft
Debit Card (NOT CREDIT CARD)

TELEPHONE AND PROXY BIDDING

If you cannot attend the auction (although we strongly advise you do) you can make a TELEPHONE or PROXY BID. This authorises the auctioneer to bid on your behalf up to a pre-set limit. Forms and relevant conditions are available to download with the online legal pack. A completed form, ID and two cheques (one for the 10% deposit and one for the Buyer's Administration Fee of £1,200) are required by the Auction Department at least two full working days before the auction.

AUCTION BUYERS GUIDE VIDEO

We have short video guides for both buying and selling by Public Auction on the Hollis Morgan Website. If you have any further questions regarding the process please don't hesitate to contact Auction HQ.

WHY HOLLIS MORGAN?

WHY HOLLIS MORGAN?

Hollis Morgan regularly hold the largest property auctions across Bristol and the West Country from our iconic Sale Room in Clifton, since we formed in 2010 we have sold the most £££'s of land and property by Public Auction in the region - EVERY YEAR!

Between 2010 and 2018 we have held 51 auctions, offering 1321 lots and raising over £270k for clients across the region.

Did you know... In 2018 we had the highest % success rate and sold more £££'s of Land and Property by auction than all the other Auctioneers in Bristol & North Somerset combined!

TESTIMONIALS

We are very proud of what our past clients have say about us - please visit the Hollis Morgan website to read their testimonials.

CHARITY OF THE YEAR

Hollis Morgan are supporting Bristol Zoo's Bear Wood Appeal as our 2019 charity of the year with 5% of each buyers premium being donated.

Bear Wood is an exciting new development due to open in Summer 2019 at Wild Place Project. The exhibit will transport visitors back in time when the woodland was inhabited by European brown bears, Eurasian lynx, European wolves and wolverine, showing the effects of

woodland loss on our native animals.

In 2018 we were delighted to be involved in raising £10,000 over 3 events for the "Off The Record" Bristol based mental health charity - www.otrbristol.org.uk

Visit the Charity page of our Website for further details - <https://www.hollismorgan.co.uk/charity/>

AUCTION PROPERTY DETAILS DISCLAIMER

Hollis Morgan endeavour to make our sales details clear, accurate and reliable in line with the Consumer Protection from Unfair Trading Regulations 2008 but they should not be relied on as statements or representations of fact and they do not constitute any part of an offer or contract. All Hollis Morgan references to planning, tenants, boundaries, potential development, tenure etc is to be superseded by the information contained in the legal pack. It should not be assumed that this property has all the necessary Planning, Building Regulation or other consents. Any services, appliances and heating system(s) listed have not been checked or tested. Please note that in some instances the photographs may have been taken using a wide angle lens. The seller does not make any representation or give any warranty in relation to the property and we have no authority to do so on behalf of the seller.